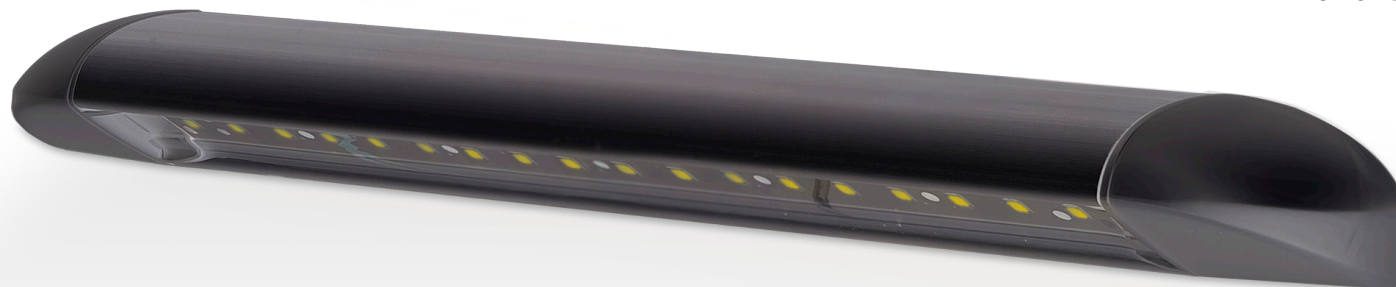


# 23 Series Awning Lamps, Black

**100%**  
Water Proof

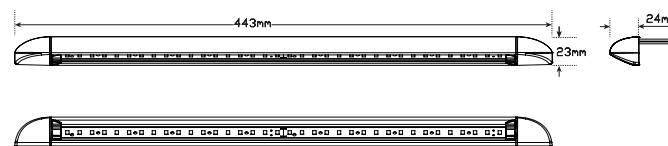
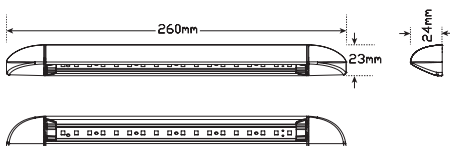
**3 Year**  
Warranty

- Two Lengths Available 260mm and 443mm
- High Brightness LEDs
- Warm White 3000 Kelvin
- Low Current Draw
- Exterior Grade Finish
- IP67 100% Water/Dust Proof



## Specifications

Part No	23260BLK	23260BLKB	23260/24BLK	23450BLK	23450BLKB	23450/24BLK
Barcode	9335962021253	9335962021260	9335962021284	9335962021239	9335962021246	9335962021277
Package	Blister	Bulk	Blister	Blister	Bulk	Blister
Function	Awning Lamp	Awning Lamp	Awning Lamp	Awning Lamp	Awning Lamp	Awning Lamp
Colour Temp	3000k	3000k	3000k	3000k	3000k	3000k
LED Qty	18	18	18	36	36	36
Voltage	12 Volt	12 Volt	24 Volt	12 Volt	12 Volt	24 Volt
Lumen	185lm	185lm	185lm	385lm	385lm	385lm
Lux @1m	80	80	80	165	165	165
Current Draw	0.18A	0.18A	0.09A	0.41A	0.41A	0.20A
Warranty	3 Year	3 Year	3 Year	3 Year	3 Year	3 Year
Cable	20cm	20cm	20cm	20cm	20cm	20cm
End Caps	ABS	ABS	ABS	ABS	ABS	ABS
Base	Aluminium	Aluminium	Aluminium	Aluminium	Aluminium	Aluminium



## Fitting Instructions

Mount to Flat surface, remove end caps to fit with supplied screws then click back into place.



All enquiries P: (03) 9466 7075 E: [led@ledtech.com.au](mailto:led@ledtech.com.au), [www.ledautolamps.com](http://www.ledautolamps.com)

All efforts are made to ensure all information is correct and up to date, it can be subject to change without notice. All measurements are in millimeters (mm) and are not to scale.

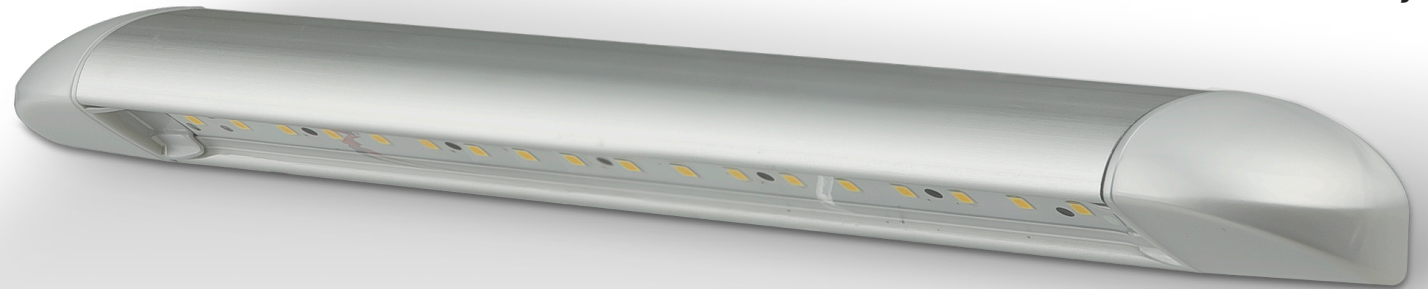
© All LED Technologies designs are registered throughout the world. - Current as of 16/11/2021

# 23 Series Awning Lamps, Silver

**100%**  
Water Proof

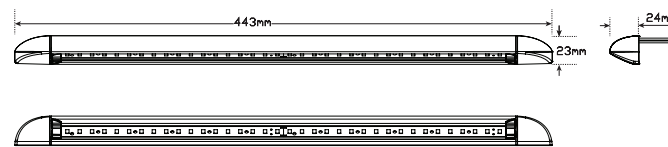
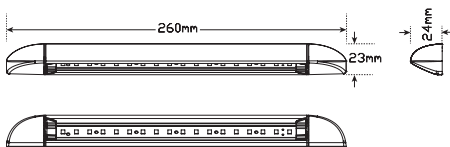
**3 Year**  
Warranty

- Two Lengths Available 260mm and 443mm
- High Brightness LEDs
- Warm White 3000 Kelvin
- Low Current Draw
- Exterior Grade Finish
- IP67 100% Water/Dust Proof



## Specifications

Part No	23260	23260B	23260/24	23450	23450B	23450/24
Barcode	9335962020355	9335962021291	9335962021307	9335962020362	9335962022489	9335962021314
Package	Blister	Bulk	Blister	Blister	Bulk	Blister
Function	Awning Lamp	Awning Lamp	Awning Lamp	Awning Lamp	Awning Lamp	Awning Lamp
Colour Temp	3000k	3000k	3000k	3000k	3000k	3000k
LED Qty	18	18	18	36	36	36
Voltage	12 Volt	12 Volt	24 Volt	12 Volt	12 Volt	24 Volt
Lumen	240lm	240lm	240lm	500lm	500lm	500lm
Lux @1m	80	80	80	165	165	165
Current Draw	0.18A	0.18A	0.09A	0.41A	0.41A	0.20A
Warranty	3 Year	3 Year	3 Year	3 Year	3 Year	3 Year
Cable	20cm	20cm	20cm	20cm	20cm	20cm
End Caps	ABS	ABS	ABS	ABS	ABS	ABS
Base	Aluminium	Aluminium	Aluminium	Aluminium	Aluminium	Aluminium



## Fitting Instructions

Mount to Flat surface, remove end caps to fit with supplied screws then click back into place.



All enquiries P: (03) 9466 7075 E: [led@ledtech.com.au](mailto:led@ledtech.com.au), [www.ledautolamps.com](http://www.ledautolamps.com)

All efforts are made to ensure all information is correct and up to date, it can be subject to change without notice. All measurements are in millimeters (mm) and are not to scale.

© All LED Technologies designs are registered throughout the world. - Current as of 16/11/2021

# 23 Series Awning Lamps, Amber/White LEDs

**Dual  
Function**

**IP67  
Protection**

**3 Year  
Warranty**

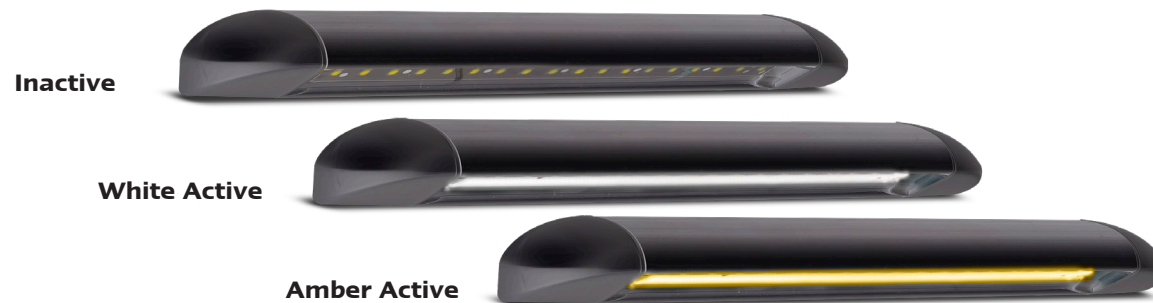
- Caravan Awning Lamps
- Black Housing
- 2 Size Available
- IP67 Rated
- 12 Volt Only
- 3 Year Warranty



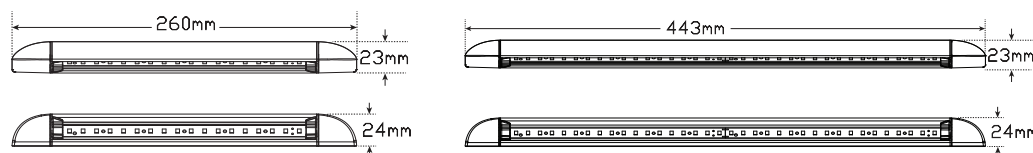
Part No.  
**23450AWB** - Single Bulk

<b>Function</b>	Amber/White Awning Lamp	
<b>Size</b>	260mm x 23mm x 24mm 443mm x 23mm x 24mm	
<b>Voltage</b>	12 Volt	
<b>LED Qty</b>	260mm (6x White, 3x Amber) 443mm (12x White, 6x Amber)	
<b>Lumens</b>	260mm (White - 87lm, Amber - 178lm) 443mm (White - 180lm, Amber - 365lm)	
<b>Illuminance @1m</b>	260mm (White - 65lx, Amber - 32lx) 443mm (White - 130lx, Amber - 67lx)	
<b>Cable</b>	200mm	
<b>Housing</b>	Aluminium	
<b>Bracket</b>	ABS	

<b>Draw @13.8V</b>	<b>260mm</b>	<b>443mm</b>
<b>White</b>	0.37A	0.72A
<b>Amber</b>	0.18A	0.37A



Part No.  
**23260AWB** - Single Bulk



## Fitting Instructions

Remove end caps and fit onto flat surface with screws supplied then refit end caps.

## Wire Colour Code

- Yellow - Amber Active
- Red - White Active
- White - Earth



All enquiries P: (03) 9466 7075 E: led@ledtech.com.au, www.ledautolamps.com

All efforts are made to ensure all information is correct and up to date, it can be subject to change without notice. All measurements are in millimeters (mm) and are not to scale.

© All LED Technologies designs are registered throughout the world. - Current as of 16/11/2021